

TOSHIBA

TOSHIBA Barcode Printer

B-EX4 SERIES

Parts List

Document No. EO8-33031A

Original FEB., 2011
(Revised)

The MOQ(Minimum Order Quantity) is set in this spare part list. Please order by the multiple quantity, when you purchase order. When quantity has not been described in the MOQ column, the quantity of MOQ is undecided. Please asks for the inquiry when you ordering the FRU part.

Preliminary version

TOSHIBA TEC CORPORATION

PRINTED IN JAPAN

TABLE OF CONTENTS

HOW TO USE THIS PARTS LIST

PARTS LIST

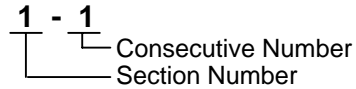
		Page
1. EXTERIOR PARTS	-----	1-1
2. INTERIOR PARTS (1)	-----	2-1
3. INTERIOR PARTS (2)	-----	3-1
30. OPTIONS	-----	4-1

CAUTION!

- 1. This manual may not be copied in whole or in part without prior written permission of TOSHIBA TEC.*
- 2. The contents of this manual may be changed without notification.*
- 3. Please refer to your local Authorised Service representative with regard to any queries you may have in this manual.*

HOW TO USE THIS PARTS LIST

- 1) Indication of Ref. No.



Section No.	Section Name
1 to 29	MECHANICAL PARTS
30 to 49	OPTIONAL PARTS

- 2) Remarks column indicates the following information:

- (1) Interchangeability of parts
- (2) Accessory
- (3) Service part
- (4) Date when the parts are added/deleted/changed
- (5) Minimum order

- 3) The columns from A through I indicate the quantity/unit for each model.
The letters A to I represent the model names which are described in the foot note.

- 4) The recommended parts column indicates the recommendation of parts stock.

	Q'ty/100 Units
Class A -----	10
Class B -----	7
Class C -----	5
Class D -----	3
Class E -----	1

- 5) Miscellaneous parts (screws, washers, etc.) shall be ordered in minimum lots of 100.
- 6) As a rule, parts not listed in this parts list cannot be ordered and we will not be responsible for problems concerning these parts.
- 7) For Excel Form: The illustrations are provided by PDF files and attached to the list of each section. To refer to the illustrations, double-click on the PDF file icons.

NOTES:

1. The parts shown in this list may be modified by TOSHIBA TEC together with issuing the parts information, if necessary.
2. The illustrations in this parts list are provided for reference and may be different from the actual parts in shape.
3. Parts with no Ref. No. and quantity are interchangeable parts.
4. For the underlined assembly parts, the components are available separately.
5. Excepting the electronic parts, "-----" in the Part No. cell in place of a part number means that the part is an optional equipment and should be ordered from the Sales Department.

1. EXTERIOR PARTS

EO8-133031
B-EX4 Series FEB., 2011



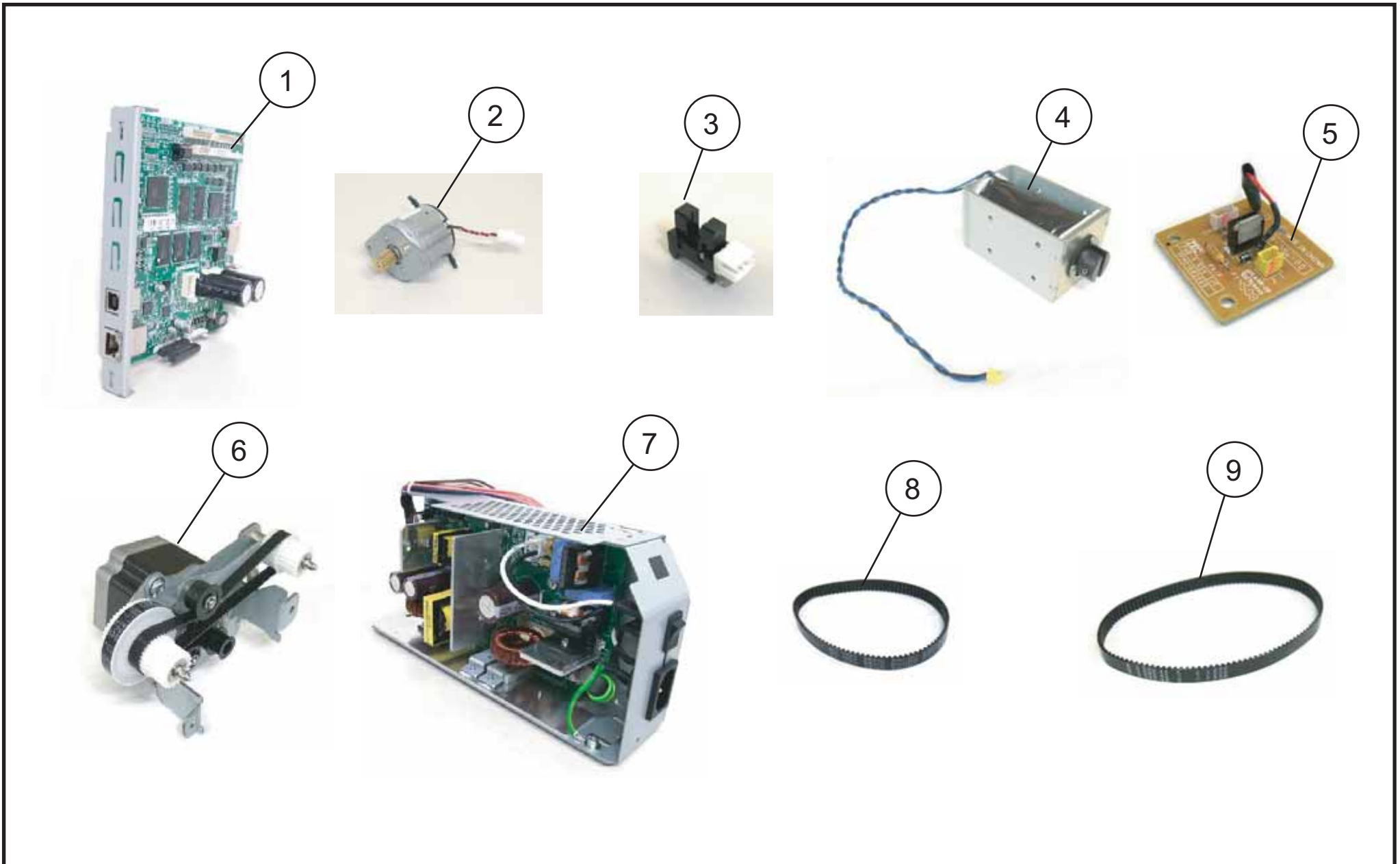
2. INTERIOR PARTS (1)

EO8-133031
B-EX4 Series FEB., 2011



3. INTERIOR PARTS (2)

EO8-133031
B-EX4 Series FEB., 2011



30. OPTIONS

EO8-133031
B-EX4 Series FEB., 2011

